

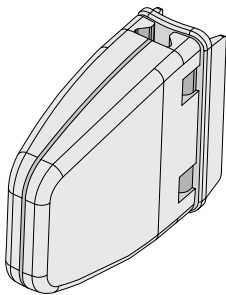
# VELOCITYSENSOR

INSTRUCTIONS



## LIST OF COMPONENTS:

- Sensor
- Battery
- Magnet
- 2x Black cable ties

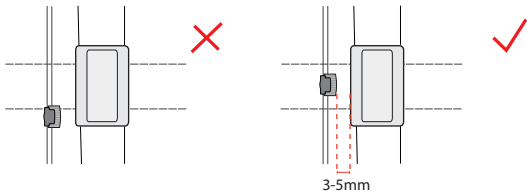


# ATTACHING THE SENSOR

# 1

The VeloCitySensor can be fitted to the front or rear wheel/forks.

1. Insert the battery to the Sensor
2. Attach the magnet to a spoke.
2. Attach the Sensor to the fork using the zip ties. The magnet should be centered on the sensor and there should be 3-5mm distance between them.





a  1part Carbon *product*  
© 2016

The VeloCityLight is  compatible.